



Westwood Building, Fulham
SW6

GARTON JONES.COM



Westwood Building, Fulham , SW6

GARTON JONES.COM

11 Park Street
Chelsea Creek
London
SW6 2FS

Sales +44 (0) 20 7824 7090
paul@gartonjones.com
www.gartonjones.com

£946 Per Week

ONLINE VIDEO AVAILABLE for this stunning two-bedroom 844sqft (78.4sqm) 1st floor apartment which comes to the rental market for the first time and located at Chelsea Creek. The modern apartment offers an open plan lounge with a custom-designed shaker-style kitchen, access to the balcony, two double bedrooms with the master benefitting from an ensuite, guest luxury bathroom with bespoke porcelain floor and wall tiles. Onsite you will find The Residents Spa with a fully equipped brand new gym, swimming pool, sauna & steam room, and access to the Halcyon Club, exclusively for residents of The King's Tower and Westwood House, boasts a private cinema, meeting room, and the crown jewel: a 31st-floor sky lounge and terrace with stunning city views. . Chelsea Creek is a unique dockside development within easy reach of Imperial wharf overground station as well as the stylish King's Road and Chelsea Harbour, with its many restaurants, bars and boutiques.

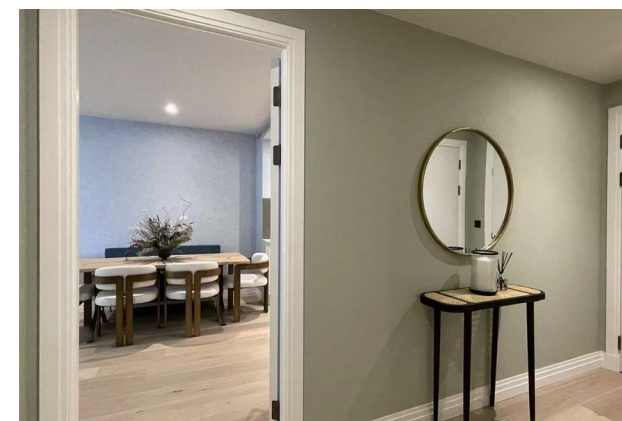
Minimum term 12 months

Deposit 5 weeks

Council Tax — London Borough of Hammersmith & Fulham Council — Band G

EPC B (84)

- Stunning Two Bedroom Apartment
- 844sqft (78.4sqm)
- Balcony
- Luxury Furniture
- Modern Kitchen with Integrated Appliances
- 1st Floor with Lift
- Access to the Halcyon Club
- 24 Hour Concierge, Gymnasium & Spa
- Close to Imperial Wharf Station
- EPC B (84)



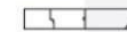
EPC certificate available on request.

2 BEDROOM APARTMENT

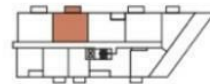
FIRST FLOOR
APARTMENT 974



BLOCK G



G1 - FIRST FLOOR



ELEVATION
NORTH WEST



TOTAL INTERNAL AREA	78.40 SQ M	844 SQ FT
LIVING / DINING	3.65M X 5.75M	12' 0" X 18' 10"
KITCHEN	3.38M X 2.16M	11' 1" X 7' 1"
BEDROOM 1	3.16M X 5.26M	10' 4" X 17' 3"
BEDROOM 2	2.82M X 4.12M	9' 3" X 13' 6"
BALCONY	6.83 SQ M	74 SQ FT

Washing machine

Integrated fridge freezer

4 ring hob

C Cupboard

U Utility room

TV

PS Privacy screen

Apartment layouts provide approximate measurements and are indicative only. Dimensions which are taken from their indicated points of measurement for guidance only and are not intended to be used for construction, appliance space or items of furniture. Apartment sizes are provided for general information only. All measurements and areas may vary within a tolerance of 10% (10th day after completion only) and are subject to change. Internal furniture layouts are indicative only and are subject to change. The above layout and location may vary. All dimensions and areas are approximate and may vary within a tolerance of 10% subject to detailed design. View points are indicative only. Floor plans have been scaled individually to fit the page.

WESTWOOD HOUSE

7/2

